

Assistant Professor, Oregon State University

Fischer, Erica



Specialties:

- Analysis, Design & Computational Modeling of Steel and Steel-Concrete Structures
- Structural Stability
- Large-scale testing of structures under cyclic loads
- Large-scale testing of structures under fire exposures
- Post-fire and post-wildfire assessment of metal structures

Qualifications & Certifications:

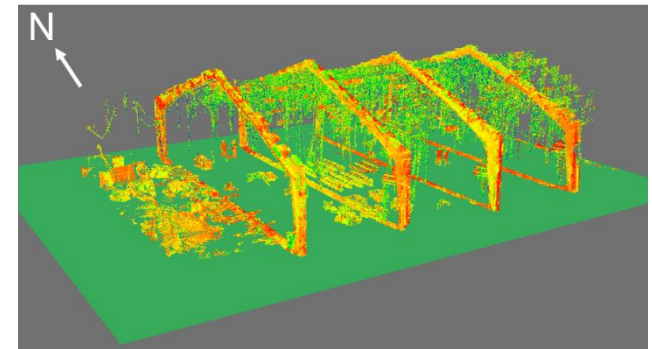
- Ph.D., 2015, Civil Engineering, Purdue University
- B.S., 2007, Civil Engineering, Cornell University
- Professional Engineer (WA, OR, CA)

Professional Experience:

- 4 years as a Professor and Research
- 5+ years as Structural Engineer

Committees & Memberships:

- AISC Task Committee 8, member
- AISC Committee on Manuals, member
- SSRC Executive Committee
- SSRC Task Group 6 (Extreme Loads), member
- EERI Board of Directors
- EERI Virtual Earthquake Reconnaissance Team, Co-Chair
- ASCE Fire Protection Committee, Vice-Chair



Summary:

Erica Fischer, PhD, PE is an Assistant Professor of Civil and Construction Engineering at Oregon State University. Dr. Fischer's research interests revolve around innovative approaches to improve the resilience and robustness of structural systems affected by natural and man-made hazards. Specifically she has focused on the fire behavior of steel structures including extensive research on the fire performance and design of simple (shear) connections and the seismic behavior of composite special moment frames, including connections. Dr. Fischer has participated in post-earthquake reconnaissance team missions in diverse regions including Haiti, Napa, California, Italy, and Mexico City; and post-wildfire reconnaissance in Paradise, CA. Dr. Fischer has experience as a practicing structural engineer and holds a Professional Engineering license in the states of Washington, California, and Oregon. She is a member of the Executive Committee of the Structural Stability Research Council.